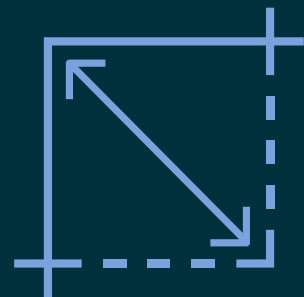




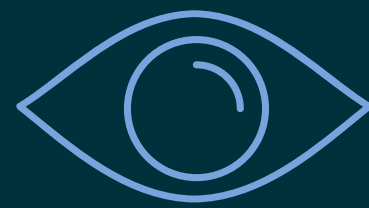
WORLD  
TRADE  
CENTER



# The Best of Four



**OPEN &  
EFFICIENT  
FLOOR PLATES**



**JAW-  
DROPPING  
VIEWS**



**VIBRANT  
NEIGHBORHOOD  
WITH IN-BUILDING  
TRANSIT ACCESS**



**STUNNING  
ICONIC  
ARCHITECTURE**

**ADDRESS**

150 Greenwich Street  
New York, NY 10007

**SIZE**

2.3 million square feet

**ARCHITECT**

Fumihiko Maki

**SLAB HEIGHT**

Slab to slab: 13.5'

**HEIGHT**

72 floors / 977 feet

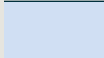


**WINDOWS**

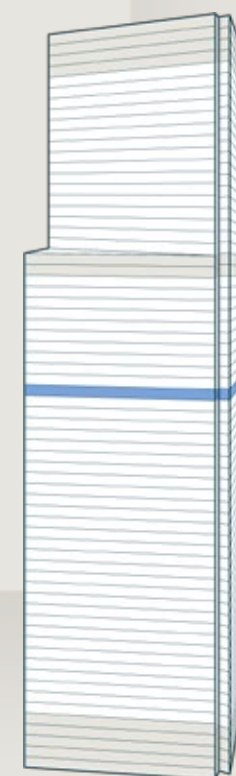
Floor to ceiling glass



# This built space availability is all dressed up & ready to go.

Totaling 13,033 SF of stylishly designed space, this turnkey workspace is ready for your talent to do their best work yet.

WORKSPACE & SUPPORT		SEATS
	Office	1
	Conference Room	3
	Flex Space	1
	Workstations	62
	Lounge Area	2
	Pantry	1
	Reception	1



**44th Floor (P)**  
13,033 RSF

\* Space is available furnished

[TAKE A VIRTUAL TOUR](#)



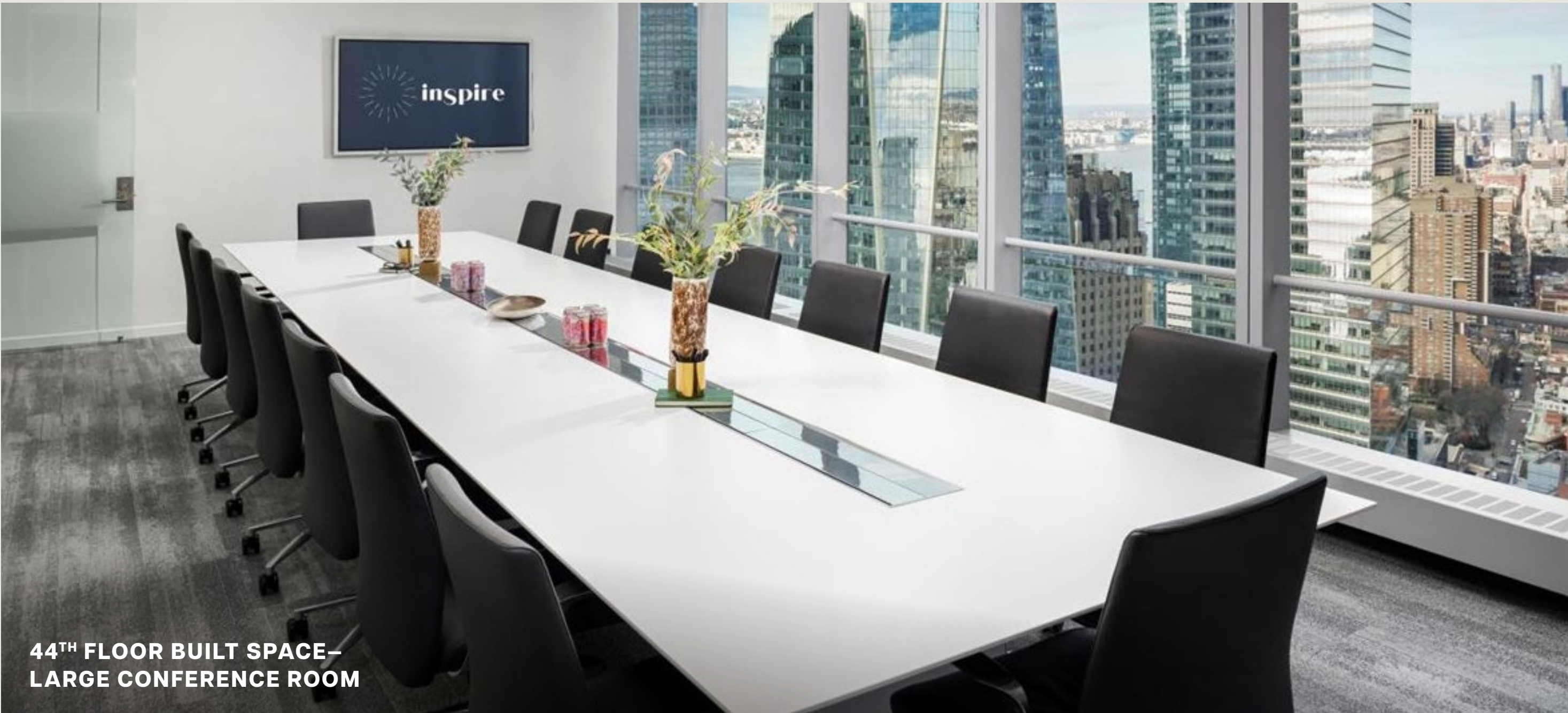
[DOWNLOAD FLOOR PLAN](#)



44<sup>TH</sup> FLOOR BUILT SPACE—  
COLLABORATIVE SPACE



VIEW—WEST



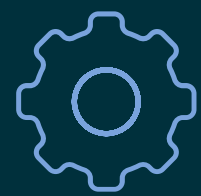
44<sup>TH</sup> FLOOR BUILT SPACE—  
LARGE CONFERENCE ROOM



VIEW—NORTH

# Everything On Tap

World Trade Center tenants enjoy convenient, contactless access to the buildings' main entrances, amenities, and other tenant-exclusive spaces via their iPhone or Apple Watch, simply by adding their access badge to Apple Wallet.



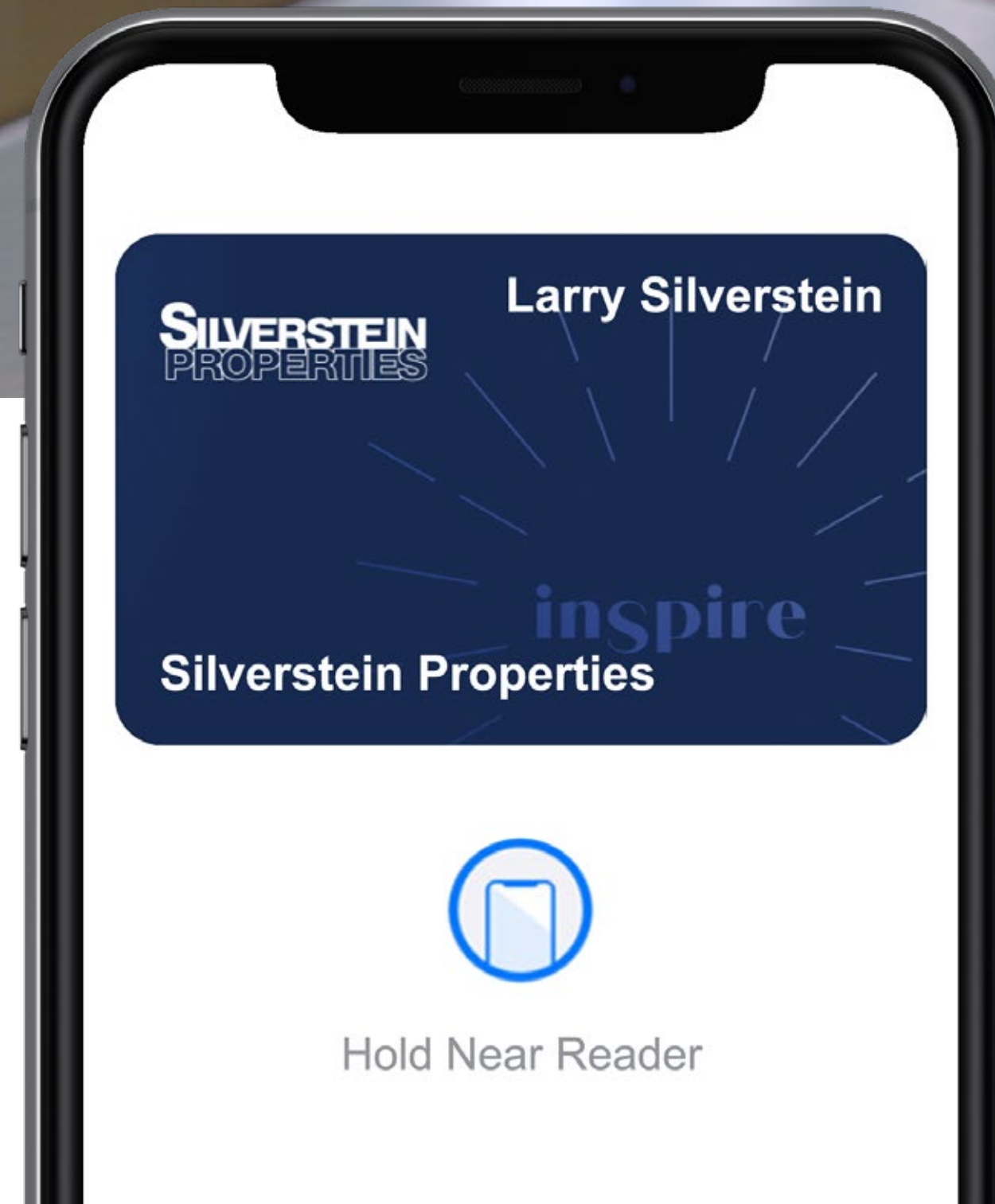
SEAMLESS SET-UP



EXPRESS MODE ACCESSIBILITY



SECURE & PRIVATE





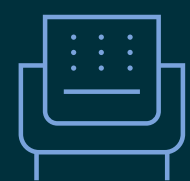
# Get Inspired

Inspire is a hospitality-infused program offering a suite of services, programming, amenity spaces and on-demand workspaces for today's flexible workforce, allowing customers to choose the best work environment for their needs.

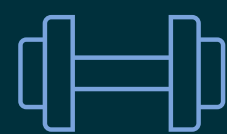
Through the Inspire program, 4 WTC occupants enjoy access to all the co-working and amenity spaces across every office building in the Silverstein portfolio.



**FLEXIBLE WORK  
& MEETING  
SPACES**



**OPEN WORK  
& LOUNGE  
SPACE**



**WELLNESS  
& SOCIAL  
PROGRAMMING**



**IN-OFFICE  
FOOD  
DELIVERY**



**CONCIERGE  
SERVICES**



**DISCOUNTS**



**INSPIRE  
APP**

[INSPIREYOURDAY.COM](https://inspireyourday.com)





**THE TERRACE**  
3 World Trade Center | New York, NY



**THE LANDMARK**  
120 Broadway | New York, NY



**THE LOUNGE**  
1735 Market Street | Philadelphia, PA



**THE BANKERS CLUB**  
120 Broadway | New York, NY



**THE STUDIO**  
7 World Trade Center | New York, NY

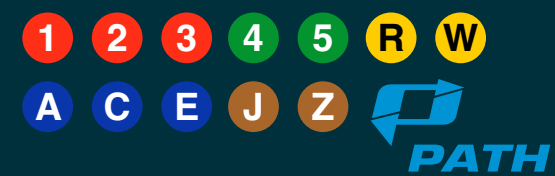


**SEVENTEEN**  
1177 Avenue of the Americas | New York, NY

# The City's Most Connected Campus

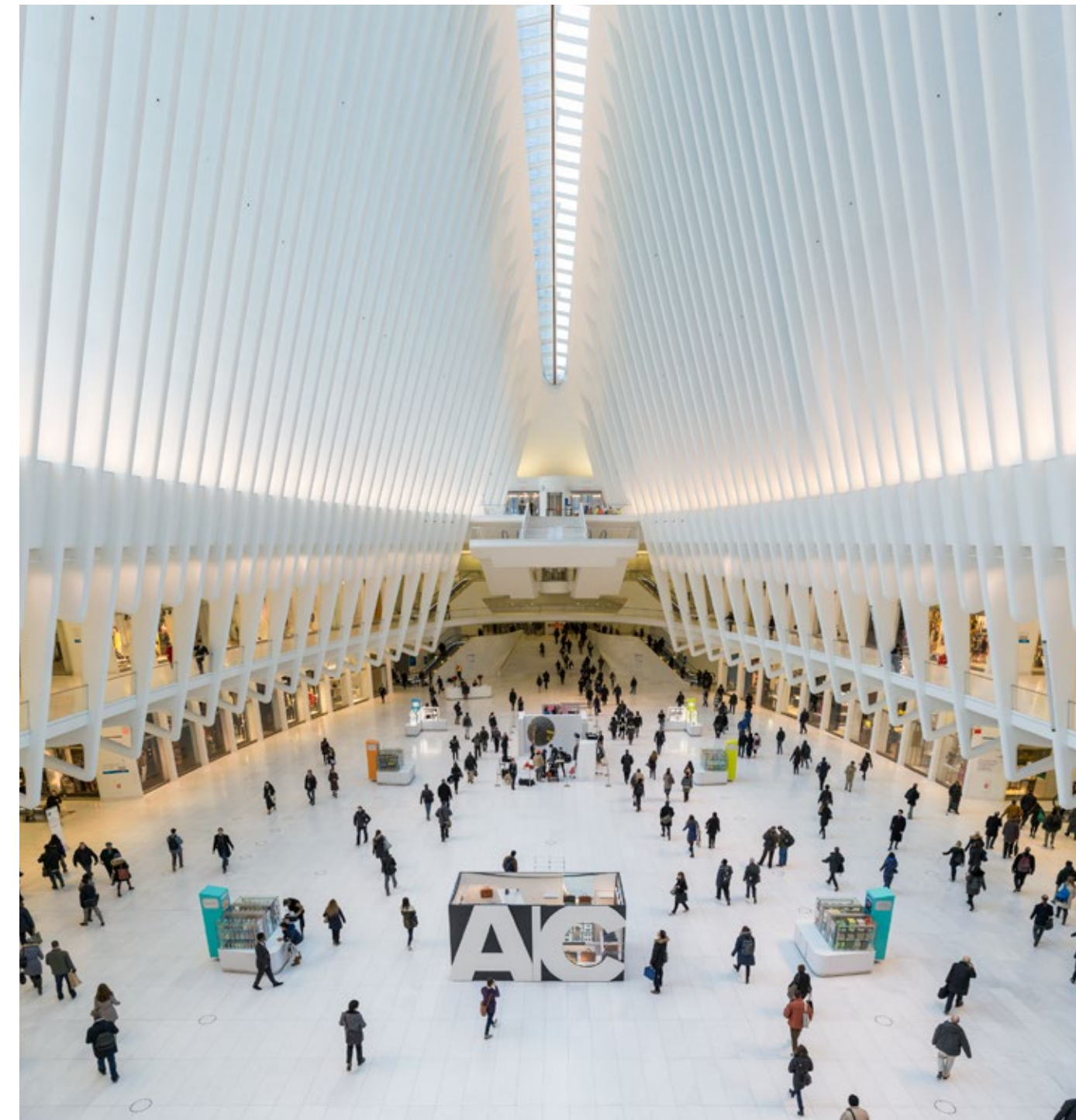
Offering in-building access to the Oculus and Fulton Center, 4 WTC puts you just steps away from virtually every city subway line.

12 SUBWAY LINES ARE LESS THAN 2 MINUTES AWAY



OVER 800,000 REGIONAL CREATIVE AND PROFESSIONAL WORKERS

1-SEAT RIDE TO DOWNTOWN



## The Oculus Transportation Hub

12 Subway Lines and PATH Trains



## Bicycle, Skate, or Walk

Access to Brooklyn, Manhattan, and Williamsburg Bridges



## NYC Waterway Ferry

To/From Midtown Manhattan, New Jersey, Queens and Staten Island



## Fulton Center

12 Subway Lines



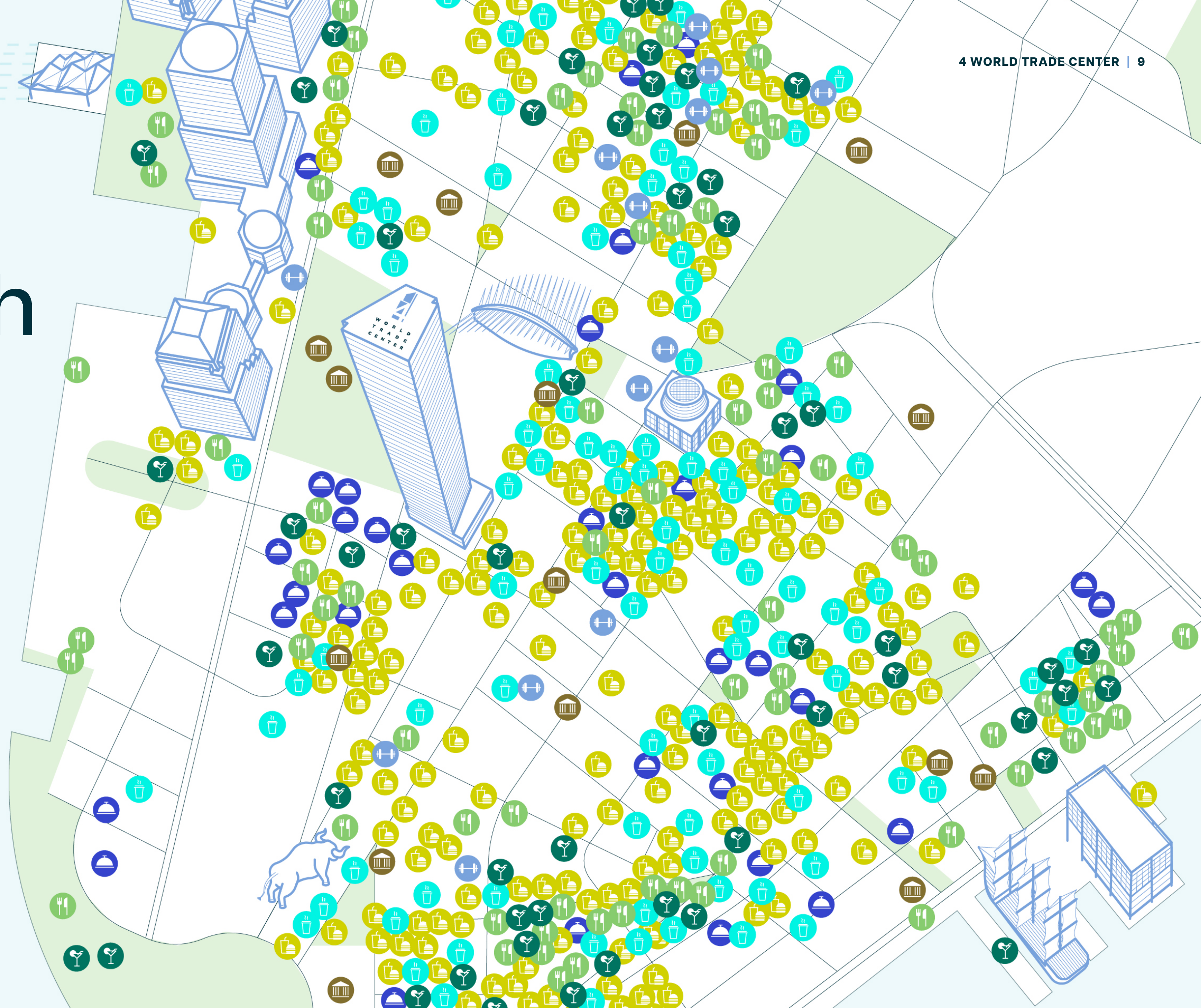
## Driving

Black car and taxi drop-off directly in front of 4 WTC along Greenwich Street



# Everything Within Reach

-  **FITNESS**
-  **HOTELS**
-  **MUSEUMS**
-  **CASUAL EATS**
-  **DINNER SPOTS**
-  **BARS**
-  **CAFÉS**



# This Neighborhood Never Sits Still

Countless hotspots to go out, restaurants to dine in, greenspaces to explore, and enough retail options to satisfy even the biggest shopping sprees. Your after-work plans just got a lot more exciting.



OCULUS BEER GARDEN



BATTERY PARK



LIBERTY BISTRO



# You Already Know Your Neighbors

Household names and the hottest up-and-comers make their home at WTC

# Where To Next?

13 min

To Grand Central Station



12 min

To Times Square



12 min

To Penn Station



11 min

To Jersey City



10 min

To Hoboken



8 min

To Union Square





**KEITH CODY**  
212.312.9229  
kcody@silvprop.com

**GORDON L. HOUGH**  
212.313.4643  
ghough@silvprop.com